

VL-7EXII

VIDEO LOUPE

SCALAR
IMPRESSIVE WORKS

VL-7EX II,
a special tool for checking hair and skin, makes a debut!

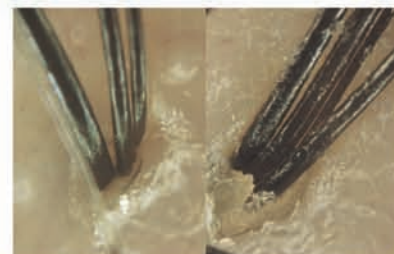


◆ The number of CCD pixels is increased 1.5 times (410,000 pixels) compared to the preceding product

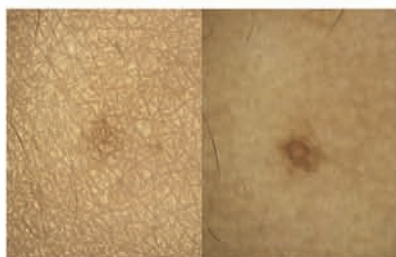
◆ New memory makes still image even clearer!

A digital memory that can be used easily with one hand is built in a compact, lightweight body (2 frames, 2 divisions).

A wide range of options are available, from various lenses for normal checking of skin, thinning hair, scalp, hair root or cuticle, to other peripheral devices.

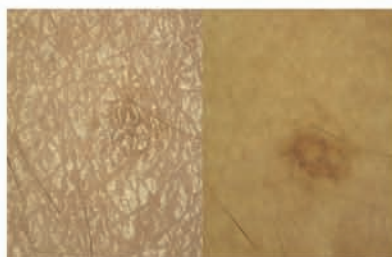


200× scalp (divided image)



30× skin

(divided image of skin texture/pigmented spot)



50× skin

(divided image of skin texture/pigmented spot)



100× scalp

VL-7EXII

VIDEO LOUPE

The latest technology and low price none other than the top-ranking manufacturer can attain

1. High image quality and excellent color reproduction

The number of CCD pixels has been increased 1.5 times (410,000 pixels) compared to the preceding product.

2. 2-frame 2-division function

Two images can be shown and saved. The 2-division function allows easy comparison of two images as well.

3. Change lenses from actual size to 750x magnification at the flip of a switch

A wide variety of lenses can be changed at the flip of a switch. Easy to operate and change lenses.

4. Switch skin texture/pigmentation images instantly

By switching between a reflected image and a non-reflected one, besides skin texture/pigmentation, scalp, sebum or hidden grey hair can be projected clearly.

5. More than 100 patents applied

None other than Scalar, which developed the world's first video loupe, has realized this cutting-edge technology at a low price.

A variety of combinations in the series

The video loupe VL-7EXII series makes a wide variety of lens combinations possible according to use. Furthermore, by combining it with a video capture available on the market, you can connect it to your personal computer, thereby expanding possibilities even further.

A wide variety of lenses

- Actual size lens ————— For normal checking of skin
 - 30× reflecting/non-reflective lenses — For checking of skin (skin texture/pigmentation)
 - 50× reflecting/non-reflective lenses — For checking of skin (skin texture/pigmentation)
 - 100× lens ————— For checking of scalp
 - 200× lens ————— For checking of scalp
 - 750× lens ————— For checking of cuticle
- (Magnification of lenses on a 14-inch monitor)

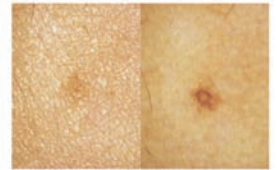
For barber shops and beauty salons Powerful tool for their hair growth course

As a tool for checking hair, this extra service can be offered to your customers.

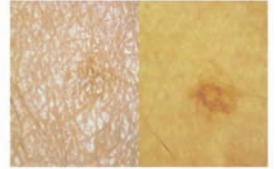
To enlarge and show a hair pouch or root, use the 200× lens (or 100×).



M100



M200



For esthetic saloons and cosmetics shops Skin check

As a sales promotion tool for skin whitening and ine smoothing cosmetics

You can explain the current state of the customer's skin on the spot, thereby providing greater assurance and satisfaction.

To show the state of the skin, such as rough dry skin, a pigmented spot, a wrinkle or a blackhead, use the 30× or 50× lens.

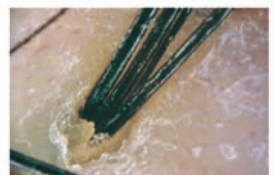
By switching between a reflected image and a non-reflected one at the flip of a switch, you can clearly show a pigmented spot or skin texture on the same area simultaneously.



M30N



M50N



Specifications

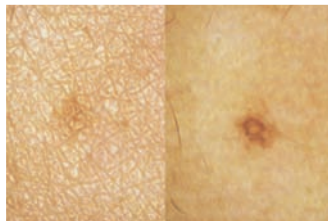
Imaging device	1/3-type CCD solid-state image sensing device
Output image signal	NTSC
Effective pixels	768 (H) × 494 (V)
Scan mode	2:1 interlaced
White balance	Automatic at normal time; push LIGHT switch to fixate (when the light is on)
Memory function	2-field still image at normal time; push both PLAY and REC switches for 2 seconds or longer simultaneously to switch to 2-frame still image
Temperature range in use	+10°C~+35°C
Humidity range in use	70% or less (condensation not allowed)
Voltage in use	AC100-240 V ± 10%
Power consumption	10 W or less
Light source	Ultra-compact high-intensity lamp

Deliverables of the Set



VL-7EX II

Probe, lens, stand with power source, camera cable, AC adapter, RCA cable



Hair Check Set

With 200x magnification lens (to check hair)



Skin Check Set

With 30x magnification lens (to check skin texture/pigmentation)

SCALAR
IMPRESSIVE WORKS

Scalar Corporation

Head office : 2-10-5 Itabashi, Itabashi-ku, Tokyo 173-0004
TEL: 03-5248-6001 FAX: 03-5248-6110

For inquiries:

SCIENCE
TECHNOLOGY RESOURCES

Science Technology Resources
5274 Scotts Valley Dr. #204
Scotts Valley, CA 95066 USA

Toll-Free 877-395-1001 (or 831-430-9061)
Fax 866-991-9591 (or 831-430-9806)

www.scientechologyresources.com (Industry)
www.skinandhairscope.com (Beauty/Medical)