

coscam

Brand New Concept of Cosmetic Camera

Perfection of Skin Care Management

CCL-215 LED TYPE



Convenient Image Capture Function

- Using capture knob on probe or foot switch to capture the image. Image can be captured from whole face to detail condition of skin or hair. (Up to X 400 magnification)



Sterilization Function for Sanitation

- UV light to sterilize each caps (Direct contact to customer's skin) while camera is on main body, which will satisfy customer needs.



Various Caps to Fit Market Needs

- Provide high resolution natural color by various caps. In addition, various magnification supports can be made without changing lens, which can provide customized skin management.



Design to Fit Anywhere

- Our state of art design can provide brand new concept of diagnosis system. This can be distinguished from other existing equipment.



Customer Management by Software Program

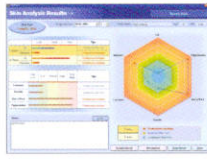
- Image management software "Cosmanager" and "Skinsys" can provide professional care as well as distinguish from others.
 - Cosmanager : Image Management Software
 - Skinsys : Skin analysis and Customer Care Management Software

Components

PARTS	LENS	CAP	APPLICATIONS
Standard	X100		X12 Vertical illuminating cap (Partial contact) Measurement of wide range wrinkle and roughness. Regional skin image capture. Hair density to trace hair losing.
			X40 Side illuminating cap (Partial contact) Skin keratin. Epidermis observation.
			X50 Vertical illuminating cap (Contact) Sebum (oily skin) observation.
			X50 Polarized filter cap (Contact) Expansion of capillary in dermis layer. Pigmentation lesion observation.
			X100 Side illuminating cap (Contact) Magnified observation of skin pore, sebum, scalp etc..
	X400		X400 Side illuminating (Contact) Observation of hair follicles in scalp, hair health and damage rate of cuticle.


SOFTWARE (OPTIONAL)

● **Skinsys Software**



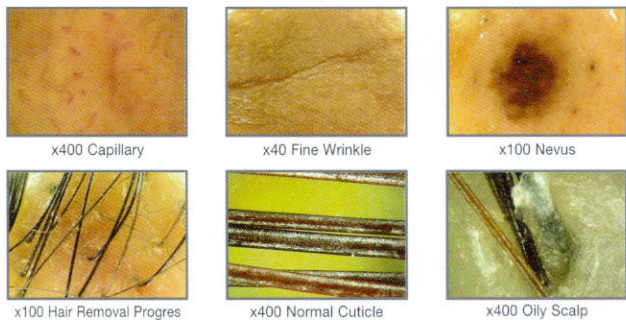
- Customer care management and sales management function.
- Image diagnosis comparison and edit function.
- Through skin diagnosis wizard to analyze condition of skin and provide suggestions.
- Customer-oriented interface.
- Scientific analysis of sebum, moisture, curvature, keratin, pore size, pigmentation etc..
- Integrated product suggestion function after skin analysis.

● **Cosmanager Software**



- Customer management, (Treatment, product sales and reservation management)
- Image save, quadrant image comparison, modification, edit, print functions.
- Image comparison for before & after.
- Skin pore size, hair thickness and sebum measurement.
- Recommendation function of treatment products according to skin and hair type.
- Sample image consolidation, report making, e-mail sending function for each customer.
- Compatibilities for various programs. (MS Word, PowerPoint etc.)

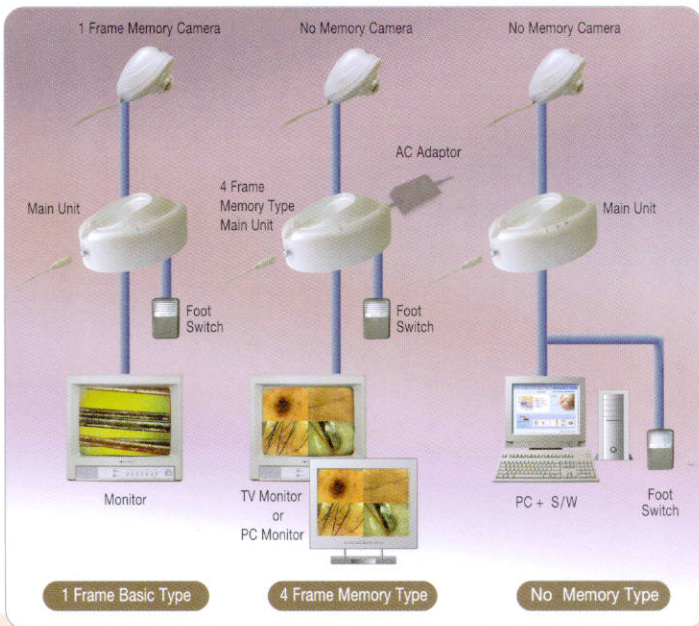
Captured Image



Software System

PARTS	MINIMUM REQUIREMENT	RECOMMENDED
CPU	Above Pentium III 1Ghz	Above Pentium IV 2,0GHz
RAM	Above 256MB	512MB
VGA	True Color(24bit), Above Support(32M)	True Color(32bit) Support(64M)
HDD	Above 20GB	60GB
MONITOR	Above 15" PC Monitor	
OS	Window 2000 / XP (Recommended)	

System



Specifications

Power Supply	100 - 240V~, 50/60Hz, 16VA		
Image Sensor	1/4" SONY Super HAD CCD™		
Signal System	NTSC	PAL	
Effective Pixels	512(H) X 492(V)	512(H) X 582(V)	
Signal Processing	DSP		
Horizontal Resolution	330 TV lines		
White Balance	1 Frame Memory Type	No Memory Type	4 Frame Memory Type
	Auto(3 sec. push set)	Fixed	Fixed
Frame Memory	1 Image	—	4 Images
Output Signal	Composite : 1EA		Composite : 1EA S-Video : 1EA VGA : 1EA
ELC	On		
Lamp	High Luminance White LED : 8 EA		
Camera Cable	2.2 m		
Weight of Camera probe	145 g		

※ Above specifications is subject to be changed for performance update without any notice.